

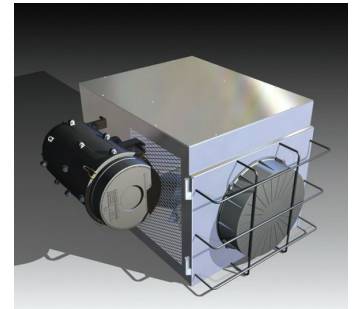
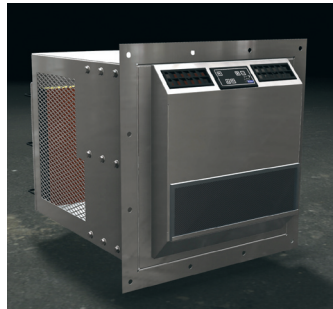
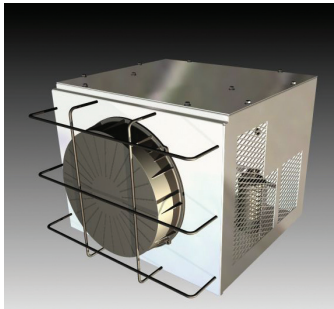


CLIMATRANS INC.

www.climatrans.com

Eastern Canada

# P-1724 Modular Cube Air Conditioner



## **POLAR P-1724 MODULAR CUBE A/C**

One-piece Modular Cube A/C unit comes in several different variations, providing high capacity cab cooling. This durable unit delivers uninterrupted, long-lasting service, even in the roughest environmental conditions, prevalent in industries such as Mining, Oil & Gas and Heavy Equipment, as well as the Military. The P-1724 is especially suited for equipment such as Shovels, Dozers, Haul Trucks, Loaders, Cranes, Excavators, Drills, as well as all underground mining machinery and Refuge Stations.

Build to last, the P-1724 is designed to eliminate operator fatigue by creating a comfortable cab environment that is dust free and temperature controlled. It requires very little maintenance because of its robust design and Heavy Duty construction.

### FEATURES & BENEFITS

- High output! Configurations ranging from 17,000 BTU to over 24,000 BTU of Cooling
- 1300 CFM Sealed Brushless Condenser Motor
- 500 CFM Airflow in cab (long life brushless motor)
- Works in ambient temperatures of 55°C / 130°F
- Copper / Copper Coils for corrosion resistance
- 2-year limited warranty

### OPTIONS

- Remote-mount Filter/Pressurizer
- Several different Power Options (24vdc, 200 to 240 VAC, 50 Hz or 60 Hz application)
- Ducting and Louver Options
- Various Mounting Option
- Sy-Klone RESPA<sup>®</sup> - CF Vortex HyperFLOW Cab Recirculation Filter System with Cab Pressure Monitor

**POLAR MOBILITY RESEARCH LTD.**  
Calgary - Red Deer - Edmonton | Alberta, Canada

**www.polarmobility.com**  
**1.800.309.8155**

