



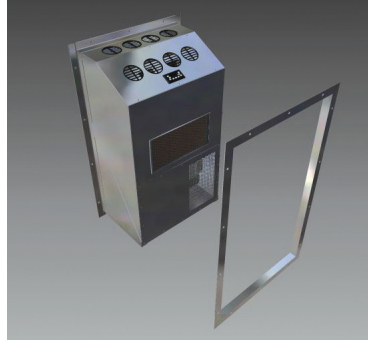
CLIMATRANS INC.

www.climatrans.com

Eastern Canada

P-5200

High Capacity Through-Wall A/C



POLAR P-5200 High Capacity Through-Wall A/C

This unit mounts into the wall and becomes part of the structural integrity of the building or cab itself. It seals completely around when bolted into place. The condenser and evaporator sections are sealed separately. All hoses and cables go through bulkhead fittings within the interior of the unit, sealing the unit to the outside.

Build to last, the P-5200 is designed to provide a comfortable work environment that is dust free and temperature controlled. It requires very little maintenance because of its robust design and Heavy Duty construction.

FEATURES & BENEFITS

- 3.5 Tonn or 38,500 BTU's
- Long-life VFD controlled Copland Scroll Compressor
- 750 CFM Sealed Brushless 20,000 hr Motors
- works in 50 hz or 60 hz (Hertz) application
- Copper / Copper Corrosion Resistant Coils
- Digital Polar Control Panel
- Satin Coat Steel, 16 ga Construction with Frame (power coated white or colour of choice)
- Eight (8) Directional Vents
- 2-year limited warranty

OPTIONS

- Several different Power Options (24vdc, 200 to 240 VAC, 50 Hz or 60 Hz application)
- Ducting interface available for top of unit
- Optional Stainless Steel housing
- Sy-Klone RESPA[®] - CF Vortex HyperFLOW Cab Recirculation Filter System with Cab Pressure Monitor

POLAR MOBILITY RESEARCH LTD.

Calgary - Red Deer - Edmonton | Alberta, Canada

www.polarmobility.com

1.800.309.8155

