

ON-ROAD

Eastern Canada

R-5045 BACK WALL**Heater/Air Conditioner Unit****ARmOReD CARS • ReSCUe VehICLeS •
peRSONNeL CARRIeRS**

Our highest-capacity backwall heater-A/C unit. Originally designed for armored cars, the R-5045 produces 430 CFM and has multidirectional louvers to direct airflow throughout aid cars, delivery trucks, and other vehicles with front and rear compartments. Specify rear air exhaust outlet or fresh-air intake.

R-5045 SPECIFICATIONS

BTU' S	Heating – 46,000 BTU/Hr @ 150°F (13.5 kW @ 66°C) water to air differential
	Cooling – 33,000 BTU/Hr with 36°F (9.7 kW @ 2.2°C) refrigerant temp. and 80°F (26.7°C) wet bulb entering air

AIR FLOW	430 CFM (730 m3/h)
----------	--------------------

WEIGHT	47 lbs. (21 kg)
--------	-----------------

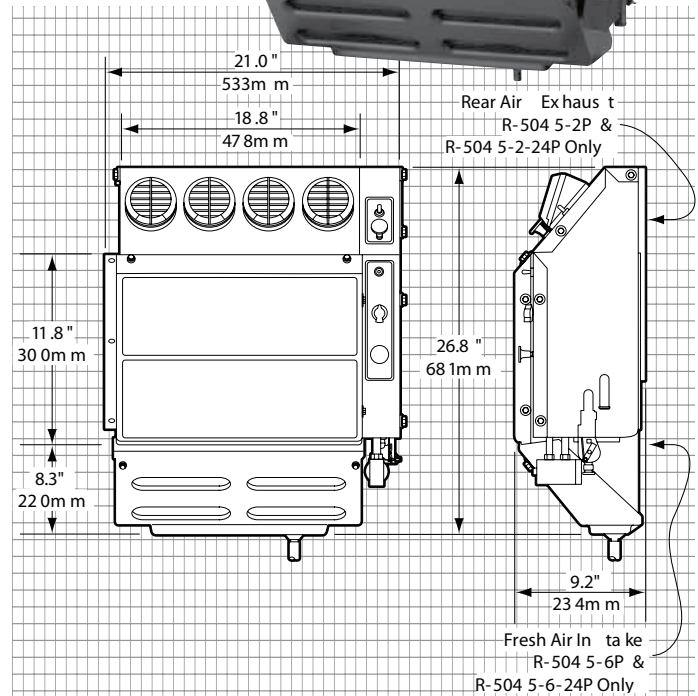
MOTOR	One three-speed
-------	-----------------

CURRENT DRAW	22.5 amps @ 13.6 VDC (includes 4 amps for A/C clutch),
	11.2 amps @ 27.2 VDC (includes 2 amps for A/C clutch)

OPTIONS:

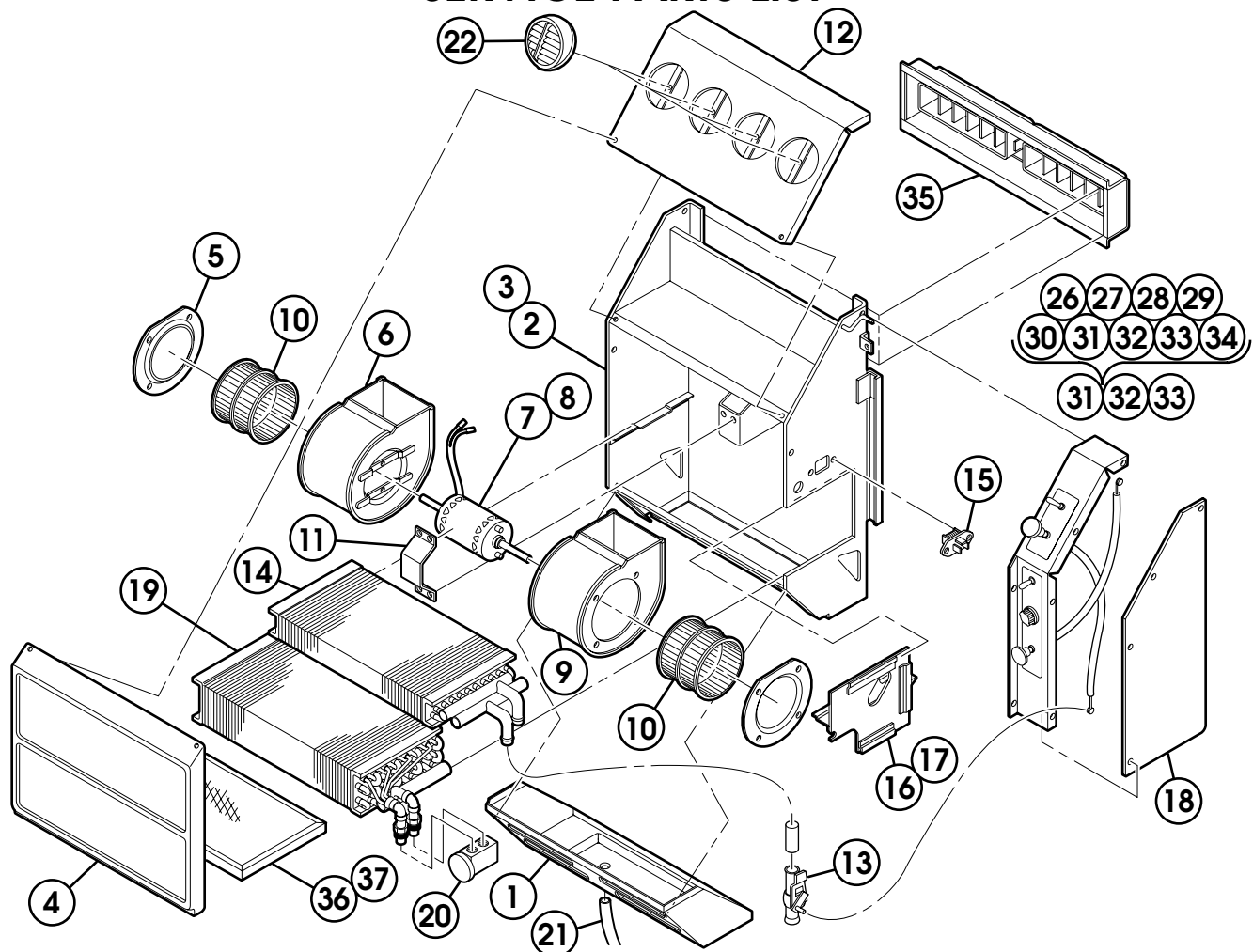
Bulkhead Louver Kit
RD-3-3133-1P
(-2 models only)

Inline Booster Pressurizer
(-3 models only)
see Filters & Pressurizers section

**R-5045 SYSTEM ORDERING GUIDE**

	R12/R-134a	NOTES
UNIT	R-5045-5P R-5045-5-24P R-5045-6P R-5045-6-24P	12 VDC - Rear Air Exhaust Outlet with rotary controls 24 VDC - Rear Air Exhaust Outlet with rotary controls 12 VDC - Fresh Air Intake 24 VDC - Fresh Air Intake
CONDENSER	77R0700 - Radiator Mount R-9730 - Remote Mount	See 77 Series Condensers section See Units Condenser section
INSTALLATION KIT	78R1025 78R1027 78R1070 78R1077	Rooftop Condenser ATCO version Front mount condenser E-Z Clip version Front mount condenser ATCO version Rooftop Condenser E-Z Clip version
COMPRESSOR	See 75 Series Compressor section	
R134A CHARGE FITTING	75R5681 & 75R5688	Required with CCI and TECUMSEH applications
CLUTCH TECUMSEH/CCI	See 75 Series Clutch section	
COMPRESSOR MOUNT KIT	See Compressor Mount Applications section	
OPTIONS	Replacement Recirc Filter 78R5400	

SERVICE PARTS LIST



ITEM	NOTE	PART NO.	DESCRIPTION	CAT. NO.	ITEM	NOTE	PART NO.	DESCRIPTION	CAT. NO.
1		RD-3205-29	AIR INTAKE COVER		20		RD-4157-0	EXPANSION VALVE	
2		RD-3-3122-1	HOUSING ASSY		21		RD-5-3550-24	DRAIN HOSE	71R 8300
3		RD-3-3122-2	HOUSING ASSY		22		RD-5-5223-2	AIR DIFFUSER ASSY (4)	78R 0070
			(R-5045-2 ONLY)		23		RD-3-3130-1	CONTROL PANEL ASSY	72R 3110
4		RD-3-3121-1	CORE COVER ASSY-FRT.		24		RD-3-3130-2	CONTROL PANEL ASSY	
5		RD-3-2592-0	ENTRY RING (2)					(A/C ONLY)	
6		RD-3-2547-0	BLOWER ASSY		25		RD-3-3130-3	CONTROL PANEL ASSY	71R 0400
7		RD-5-5049-0	MOTOR 12V	73R 4322				(R-5045-2 ONLY)	
8		RD-5-5049-24	MOTOR 24V	73R 4324	26		RD-3-5106-1	PANEL - CONTROL	
9		RD-3-2547-1	BLOWER ASSY		27		RD-3-5106-2	PANEL-CONTROL (A/C ONLY)	
10		RD-3-2557-0	BLOWER WHEEL (2)		28	A	RD-5-3646-0	SWITCH-3 SPEED (A/C ONLY)	71R 0200
11		RD-3-3174-0	RETAINER - MOTOR		29		RD-4124-20	CABLE - CONTROL (2)	71R 2250
12		RD-3-3128-0	PANEL ASSY - TOP		30		RD-5-3764-0	NUT - BEZEL (2)	71R 4050
13		RD-5-5300-1	WATER VALVE	72R 5210	31		RD-4123-2	SWITCH - TOGGLE	
14		RD-1-0325-0	HEATER CORE ASSY	76R 3500	32		RD-5-0071-0	SWITCH - TOGGLE	
15		RD-5-3647-0	RESISTOR	71R 1450	33	A	RD-4125-36	THERMOSTAT - VARIABLE	
16		RD-3-3315-0	COVER ASSY-CORE SIDE		34		RD-5-5928-0	KNOB - CONTROL	
17		RD-3-3315-1	COVER ASSY-CORE SIDE		35		RD-3-3133-0	LOUVER ASSY (PURCH. SEP.)	
18		RD-3-3132-1	PLATE ASSY SIDE		36		RD-5-5428-0	FILTER	
19		RD-2-1370-0	EVAPORATOR ASSY		37	A	RD-3-3753-0	CLIP FILTER (2)	

A. NOT SHOWN

ORDERING INFORMATION

ORDER BY MODEL # R-5045-1,2 OR -3 FOR 24 VOLT APPLICATIONS ADD-24 TO MODEL NUMBER.

Additional Cost Items May be needed To Complete System.

1. Condenser-Either Frontal Or Rooftop. See Applications Section of the Red Dot Aftermarket Parts Catalog.
2. Heater Hose & Fittings And General Installation Kit 78R 1000, Including Freon Hose, Fittings and Receiver/Drier.
3. Compressor, Compressor Mounting Brackets, And Clutch. See Applications Section of the Red Dot Aftermarket Parts Catalog.

RED DOT CORPORATION P.O. Box 58270 Seattle, WA 98138 (253) 575-3840

RD-3-3336-0 (REV C)

FOR REFERENCE ONLY. SUBJECT TO CHANGE WITHOUT NOTICE

OFF-ROAD

R-5075 BACKWALL*Heater/Air Conditioner Unit***CONSTRUCTION • MINING • AGRICULTURE**

The R-5075 packages the performance and durability of our R-5045 heater-A/C unit into a robust metal housing for off-road equipment cabs. This unit has fresh-air intake and options include an in-line booster blower for a pressurized, dust-free cab

OPTIONS:

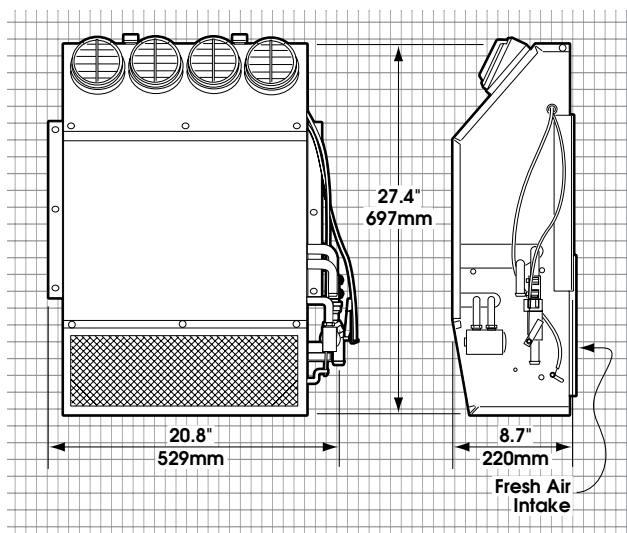
Inline Booster Pressurizers:
see Filters & Pressurizers section



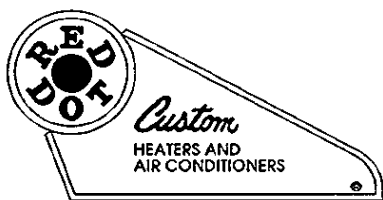
Panel Filter:
78R5150
Replacement Filter:
78R5320

**R-5075 SPECIFICATIONS**

BTU'S	Heating – 46,000 BTU/Hr @ 150°F (13.5 kW @ 66°C) water to air differential Cooling – 33,000 BTU/Hr with 36°F (9.7 kW w/ 2.2°C) refrigerant temp. and 80°F (26.7°C) wet bulb entering air
AIR FLOW	430 CFM (730 m3/h)
WEIGHT	47 lbs. (21 kg)
MOTOR	One three-speed
CURRENT DRAW	21.8 amps @ 13.6 VDC (includes 4 amps for A/C clutch) 10.9 amps @ 27.2 VDC (includes 2 amps for A/C clutch)

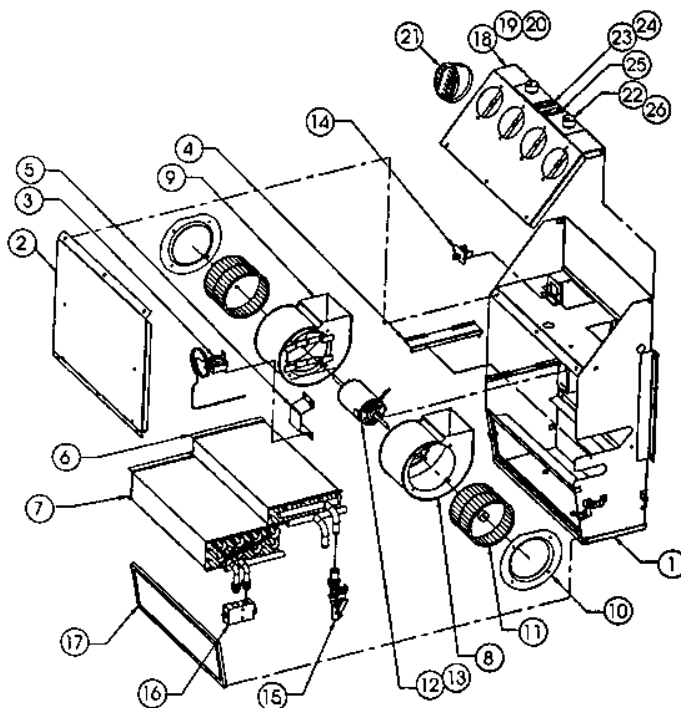
**R-5075 SYSTEM ORDERING GUIDE**

	R12/R-134a	NOTES
UNIT	R-5075-0P R-5075-0-24P	12 VDC 24 VDC
CONDENSER	77R0700 - Radiator Mount R-9730 - Remote Mount	See 77 Series Condensers section See Units Condensers section
INSTALLATION KIT	78R1025 78R1027 78R1070	Rooftop Condenser ATCO version Front mount condenser E-Z Clip version Front mount condenser ATCO version
COMPRESSOR	See 75 Series Compressor section	
R134A CHARGE FITTING	75R5681 & 75R5688	Required with CCI and TECUMSEH applications.
CLUTCH TECUMSEH/CCI	See 75 Series Clutch section	
COMPRESSOR MOUNT KIT	See Compressor Mount Applications section	
OPTIONS	Replacement Recirc Filter Replacement Fresh Air Intake Filter Fresh Air Intake	78R5360 78R5320 78R5150



Heater- Air Conditioner Model R-5075

SERVICE PARTS LIST



ITEM	NOTE	PART NO.	DESCRIPTION	CAT. NO	ITEM	NOTE	PART NO.	DESCRIPTION	CAT. NO
1		RD-3-7243-0	HOUSING ASSY.		14		RD-5-3647-0	RESISTOR-SPEED CONTROL	71R1450
2		RD-3-7244-0	COVER ASSY-CORE		15		RD-5-7760-0	VALVE-WATER CABLE OPER.	
3		RD-4427-24	THERMOSTAT	71R3100	16		RD-5-6868-0	VALVE-R-134a/R12 CMPTBL71R8300	
4		RD-3-7252-13	RETAINER-CORE		17		RD-5-8076-0	FILTER-AIR 17.5x5.5x.34 THK	
5		RD-3-3174-13	RETAINER-MOTOR		18		RD-3-7254-0	PLENUM ASSY CNTRL PNL, 12 V	
6		RD-1-0325-13	HEATER CORE ASSY	76R3500	19		RD-3-7254-1	PLENUM ASSY-CNTRL PNL, 24 V	
7		RD-2-1370-0	EVAPORATOR CORE ASSY	76R7070	20		RD-3-7255-0	WRAP ASSY-PLENUM	
8		RD-3-2547-0	BLOWER ASSY		21		RD-5-5223-2	AIR DIFFUSER ASSY	
9		RD-3-2547-1	BLOWER ASSY		22		RD-5-8152-27.8	ROTARY ACTUATOR ASSY	
10		RD-3-2592-0	ENTRY RING		23		RD-5-7183-1	SWITCH-MODE OFF-ON-ON 12V	
11		RD-3-2557-0	BLOWER WHEEL	73R7150	24		RD-5-7183-0	SWITCH-MODE OFF-ON-ON 24 V	
12		RD-5-5049-0	MOTOR-12 VOLT	73R4322	25		RD-5-7181-0	SWITCH-RCKR FAN ON-ON-ON	
13		RD-5-5049-24	MOTOR-24 VOLT	73R4324	26		RD-5-8075-0	KNOB-CNTRL DEEP RECES	

A. NOT SHOWN B. HTR-A/C ONLY C. HEATER ONLY

Red Dot Corporation PO Box 88790, Seattle, WA 98138 (425) 251-6897 Fax (425) 251-3934

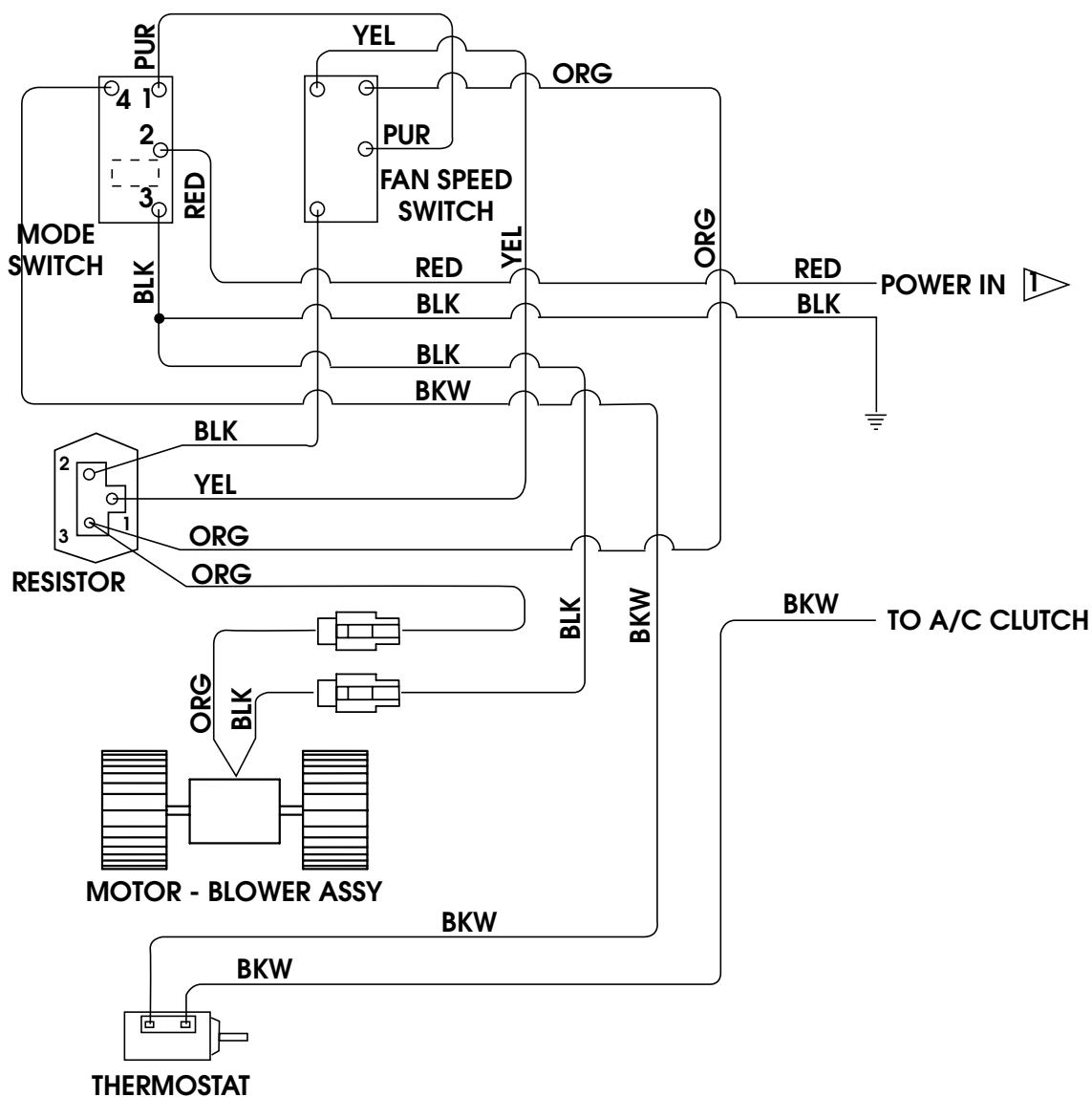
RD-5-8074 REV -

For Reference Only. Subject to change without notice

Page 1 of 1



ELECTRICAL SCHEMATIC



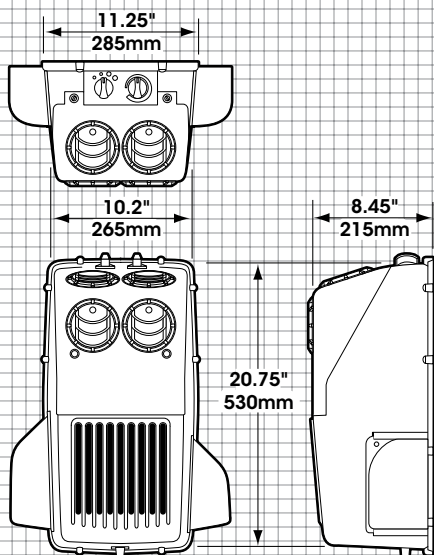
ON/OFF-ROAD

R-6840 Backwall*Air Conditioner Unit*

**VANS • COMMERCIAL TRUCKS • INDUSTRIAL •
CONSTRUCTION • AGRICULTURE**

Our R-6840 backwall air conditioner uses Red Dot's advanced coil and blower technology to produce the highest capacity possible from a compact wall-mounted unit. The resin housing is tough and good-looking—perfect for cabs where performance and fit and finish are important. Multidirectional diffusers send air where you need it. Floor support kit available.

HEATER-A/C



*R-6840 shown with
optional floor support kit
and plumbing covers*

OPTIONS:

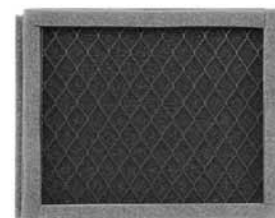
Plumbing Covers
RD-2-3515-0P



Floor Support Kit
RD-2-3673-0P



Filter
RD-2-3683-0P



R-6840 SPECIFICATIONS

BTU'S	Cooling – 22,300 BTU/Hr with 36°F (6.5 kW with 2.2°C) refrigerant temp and 80°F (26.7°C) wet bulb entering air
AIR FLOW	325 CFM (552 m3/h)
WEIGHT	16 lbs. (7.3 kg)
CURRENT DRAW	18.6 amps @ 13.6 VDC (includes 4 amps for A/C clutch); 9.5 amps @ 27.2 VDC (including 2 amps for A/C clutch)
CONTROLS	High-low motor speed, four adjustable louvers, adjustable thermostat

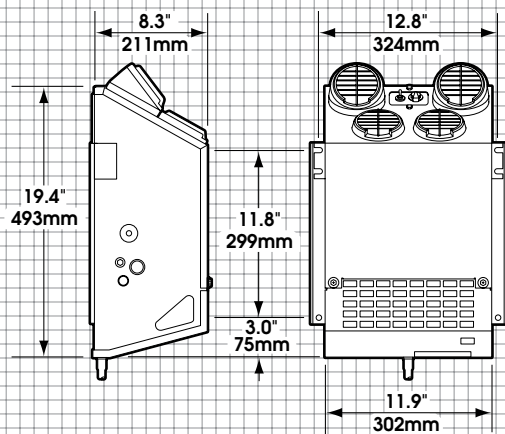
R-6840 SYSTEM ORDERING GUIDE

	R12/R-134a	NOTES
UNITS	R-6840-0P R-6840-0-24P	12 VDC – Variable Thermostat 24 VDC – Variable Thermostat
CONDENSER	R-6160 - ROOF MOUNT 77R0650 - RADIATOR MOUNT	See Units Condensers section See 77 Section Condensers section
INSTALLATION KIT	78R1025 78R1027 78R1070	Rooftop Condenser ATCO version Front mount condenser E-Z Clip version Front mount condenser ATCO version
COMPRESSOR	See 75 Series Compressor section	
R134A CHARGE FITTING	75R5681 & 75R5688	Required with CCI and TECUMSEH applications.
CLUTCH TECUMSEH/CCI	See 75 Series Clutch section	
COMPRESSOR MOUNT KIT	See Compressor Mount Applications	
OPTIONS	Floor Support Kit Plumbing Covers (left and right) Recirc Filter Remote Control Panel Kit	RD-2-3673-0P RD-2-3515-0P RD-2-3683-0P RD-2-3674-0P

ON/OFF-ROAD

R-7830 Backwall*Air Conditioner Unit***VANS • COMMERCIAL TRUCKS • INDUSTRIAL •
CONSTRUCTION • AGRICULTURE**

The R-7830 easily fits between the seats to mount to a bulkhead or back wall of a day cab, or can be front-dash mounted where a flat space permits. The welded steel housing provides protection yet allows easy access to components. Multidirectional diffusers send air where you need it. Floor support kit available.

**OPTIONS:****Floor Support Kit**

RD-2-1398-0P (shown above)

Recirc Filter

78R5390

R-7830 SPECIFICATIONS

BTU'S	Cooling – 17,180 BTU/Hr with 36°F (5 kW with 2.2°C) refrigerant temp and 80°F (26.7°C) wet bulb entering air
AIR FLOW	260 CFM (442 m3/h)
WEIGHT	25 lbs. (11 kg)
CURRENT DRAW	18 amps @ 13.6 VDC (includes 4 amps for A/C clutch); 9 amps @ 27.2 VDC (including 2 amps for A/C clutch)
CONTROLS	High-low motor speed, four adjustable louvers, adjustable thermostat

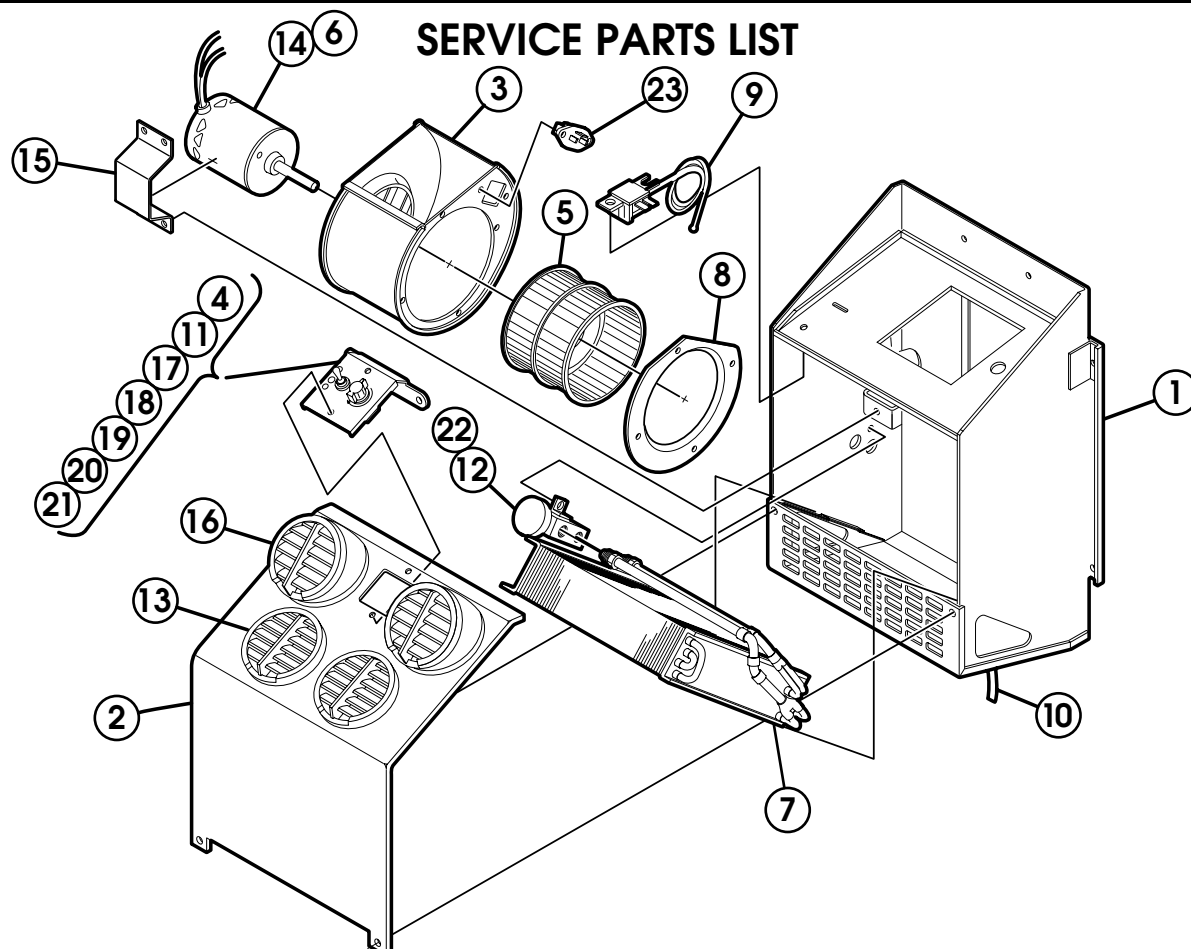
R-7830 SYSTEM ORDERING GUIDE

	R12/R-134a	NOTES
UNITS	R-7830-0P R-7830-0-24P	12 VDC – Variable Thermostat 24 VDC – Variable Thermostat
CONDENSER	R-6160-0P – Roof Mount R-6160-0-24P – Roof Mount 77R0650 – Radiator Mount	12 VDC – See Units Condensers section 24 VDC – See Units Condensers section See 77 Series Condensers section
INSTALLATION KIT	78R1025 78R1027 78R1070 78R1077	Rooftop Condenser ATCO version Front mount condenser E-Z Clip version Front mount condenser ATCO version Rooftop Condenser E-Z Clip version
COMPRESSOR	See 75 Series Compressor section	
R134A CHARGE FITTING	75R5681 & 75R5688	Required with CCI and TECUMSEH applications.
CLUTCH TECUMSEH/CCI	See 75 Series Clutch section	
COMPRESSOR MOUNT KIT	See Compressor Mount Applications section	
OPTIONS	Floor Support Kit Recirc Filter Kit	RD-2-1398-0P 78R5390

INSTALLATION TIPS

IDEAL FOR MOUNTING VERTICALLY BETWEEN THE SEATS ON THE BACK WALL OF A TRUCK CAB, OR THE SIDE WALL OF AN OFF-HIGHWAY CAB ON CABS WHERE EXTRA SUPPORT IS REQUIRED TO COMPLETE INSTALLATION, MOUNT SUPPORT KIT RD-2-1398-0 SHOULD BE USED TO SIMPLIFY INSTALLATION.

- NOTES: 1. REINFORCING MAY BE REQUIRED WHEN MOUNTING DIRECTLY TO CAB WALL.
2. DUE TO THE WIDE VARIETY OF CONDITIONS FOUND IN OFF HIGHWAY APPLICATIONS, IT IS RECOMMENDED THAT A TRIAL INSTALLATION BE MADE TO DETERMINE IF THESE PRODUCTS ARE SUITABLE TO A PARTICULAR APPLICATION.



SERVICE PARTS LIST

ITEM	NOTE	PART NO.	DESCRIPTION	CAT. NO.	ITEM	NOTE	PART NO.	DESCRIPTION	CAT. NO.
1		RD-2-1389-0	HOUSING ASSY.		13		RD-5-5222-0	DIFFUSER (2)	
2		RD-2-1387-0	HOUSING COVER ASSY		14		RD-5-4827-24	MOTOR (24V)	
3		RD-2-1315-0	BLOWER SCROLL ASSY		15	C	RD-3-3174-0	RETAINER - MOTOR	
4	A	RD-2-1393-0	LABEL CONTROL PANEL		16		RD-5-5223-2	DIFFUSER ASSY. (2)	
5		RD-3-2557-0	BLOWER WHEEL	73R 7150	17	A	RD-4125-36	THERMOSTAT	71R 2250
6		RD-5-3753-1	MOTOR (12V)	73R 0402	18	A	RD-5-5928-0	KNOB	71R 4050
7		RD-2-1316-0	EVAPORATOR ASSY.	76R 6350	19	B	RD-2-1392-0	LABEL CONT. PNL. (FIXED)	
8		RD-2-1354-0	AIR ENTRY RING		20	A	RD-2-1487-0	CONTROL PANEL ASSY.	
9	B	RD-5-4531-24	THERMOSTAT	71R 3200	21	B	RD-2-1487-1	CONTROL PANEL ASSY.	
10		RD-5-3550-120	DRAIN HOSE	78R 0070	22		RD-4157-0	EXPANSION VALVE (R-12)	71R 8300
11		RD-5-3599-0	SWITCH	71R 0200	23		RD-5-3647-0	RESISTOR	71R 1450
12		RD-5-6868-0	EXPANSION VALVE (R-134a)	71R 8300					

A. VARIABLE THERMOSTAT MODEL B. FIXED SET THERMOSTAT MODEL C. 24 VOLT APPLICATION

ORDERING INFORMATION

ORDER BY MODEL NUMBER **R-7830-0** FOR ADJUSTABLE THERMOSTAT OR **R-7830-1** FOR FIXED SET THERMOSTAT.
FOR 24 VOLT APPLICATIONS ADD **-24** TO MODEL NUMBER.
FOR MOUNT SUPPORT KIT USE **RD-2-1398-0**.

Additional cost items required for complete system:

1. Condenser - Either Frontal or R-6060 Rooftop.
2. General Installation Kit including Hose Fittings, Receiver Dryer, and Compressor.
3. Compressor Engine Mounting Bracket including Clutch.

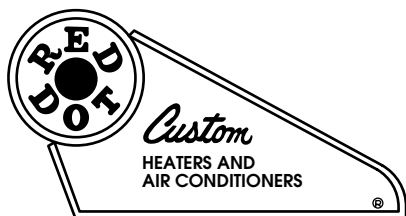
RED DOT CORPORATION P.O. Box 58270 Seattle, WA 98138 (206) 575-3840

RD-2-1400-0 (REV C)

FOR REFERENCE ONLY. SUBJECT TO CHANGE WITHOUT NOTICE

2-12BC
2/94

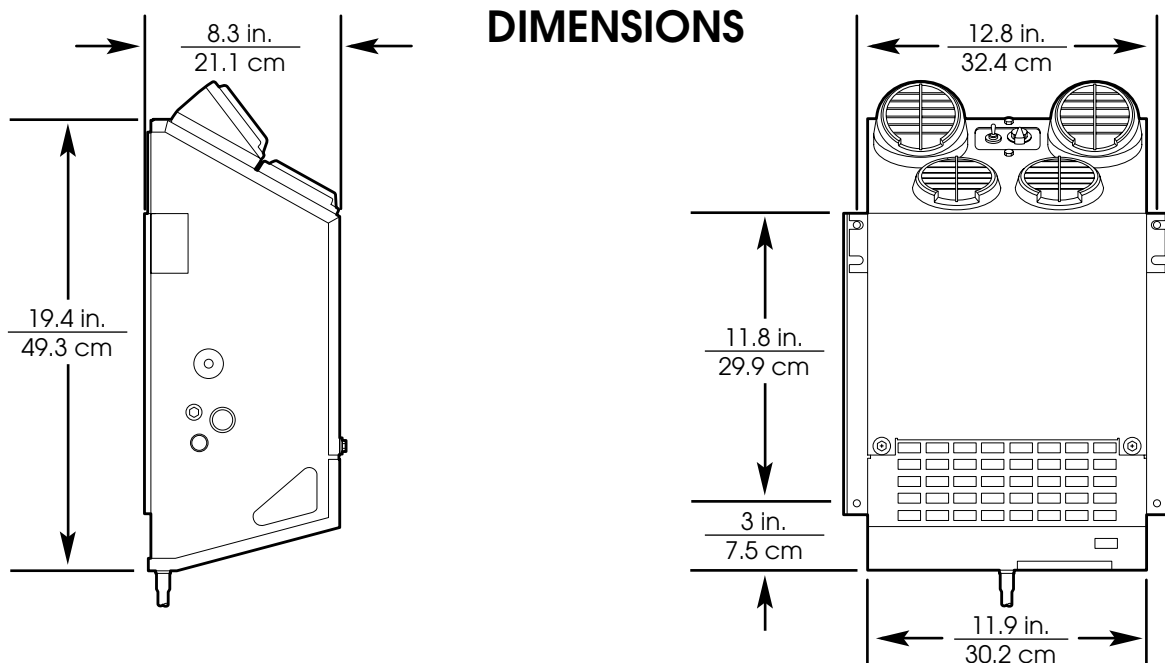
PRINTED ON RECYCLED PAPER



R-134a Compatible

Red Dot Air Conditioner R-7830 Series

TECHNICAL SALES BULLETIN AND SERVICE PARTS LIST

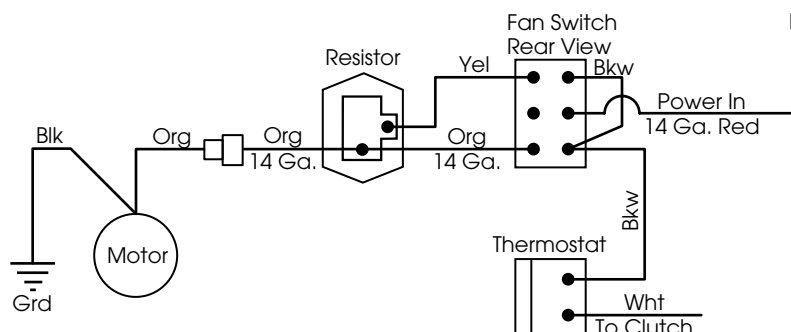


SPECIFICATIONS

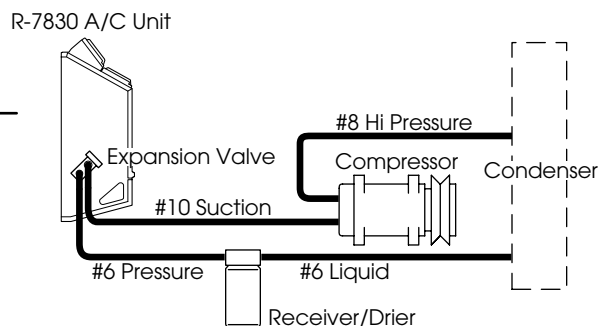
BTU's:	17,180 BTU/Hr with 36°F (4329 kcal/h w/2.2°C) Refrigerant Temp. and 80°F (26°C) Wet Bulb Entering Air
Air Flow:	260 CFM (442 m ³ /h)
Weight:	25 Lbs. (11 Kg)
Current Draw:	18 Amps @ 13.6 V.D.C. (Includes 4 Amps for A/C Clutch) 9 Amps @ 27.2 V.D.C. (Includes 2 Amps for A/C Clutch)

SCHEMATICS

ELECTRICAL SCHEMATIC



PLUMBING SCHEMATIC



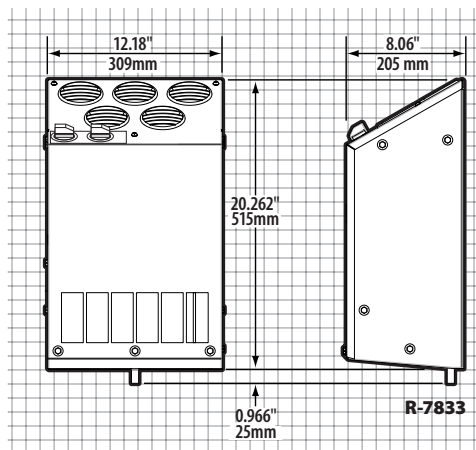
Use 30 Amp fuse or breaker (customer supplied).
WARNING: Unit warranty void if fused power source not used.

ON/OFF-ROAD**R-7833 Backwall****Air Conditioner Unit****OFF-ROAD • CONSTRUCTION • INDUSTRIAL**

Just 12.18 inches wide, the R-7833 fits between the seats in cabs where mounting options are limited. The five louvers adjust so you can direct airflow where you need it, and the heavy-gauge welded-steel construction is ideal for severe service environments. Optional mounting brackets allow up to 4 inches of height travel.

R-7833 SPECIFICATIONS

BTU'S:	Cooling – 21,000 BTU/Hr
AIR FLOW:	293 CFM (498 m ³ /h)
WEIGHT:	27 lbs. (12kg)
CURRENT	15.5 amps at 13.5 VDC
Draw:	7.8 amps at 27 VDC

**HEATER-A/C****R-7833 SYSTEM ORDERING GUIDE**

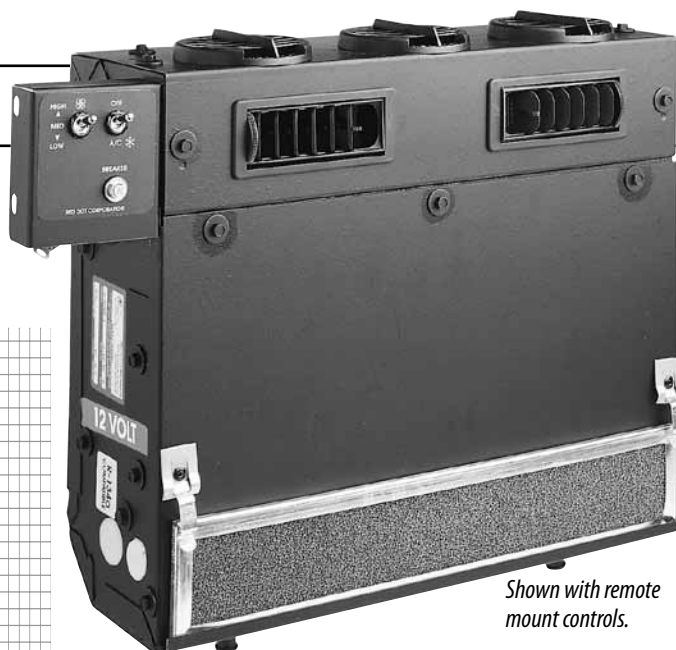
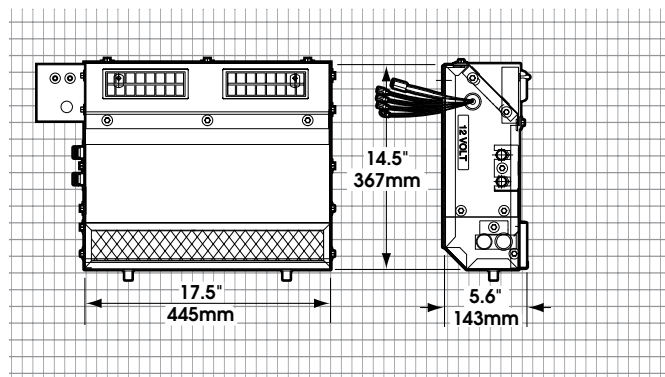
	R12/R-134a	NOTES
UNITS	R-7833-0P R-7833-0-24P	12 VDC 24 VDC
CONDENSER	R-6160-0P - Roof Mount R-6160-0-24P - Roof Mount 77R0650 - Radiator Mount	12 VDC – See Units Condensers section 24 VDC – See Units Condensers section See 77 Series Condensers section
INSTALLATION KIT	78R1025 78R1027 78R1070 78R1077	Rooftop Condenser ATCO version Front mount condenser E-Z Clip version Front mount condenser ATCO version Rooftop Condenser E-Z Clip version
COMPRESSOR	See 75 Series Compressor section	
R134A CHARGE FITTING	75R5681 & 75R5688	Required with CCI and TECUMSEH applications.
CLUTCH TECUMSEH/CCI	See 75 Series Clutch section	
COMPRESSOR MOUNT KIT	See Compressor Mount Applications section	
OPTIONS	Mounting Kit	RD-5-14175-0P

OFF-ROAD

R-8500 Backwall*Air Conditioner with Heat Option***CONSTRUCTION • MINING •
AGRICULTURE**

Just 5.6 inches deep, the R-8500 packs high performance and reliability into a slim profile. The air plenum can be changed to divert air out the top or the front of the unit depending the application. In addition, the controls can be remote-mounted. Models include A/C only or heater and A/C combination.

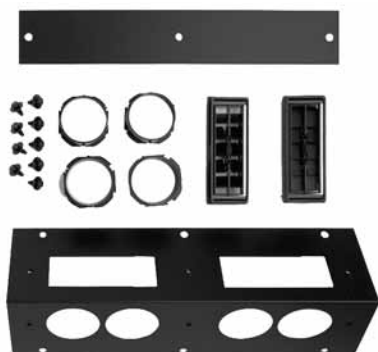
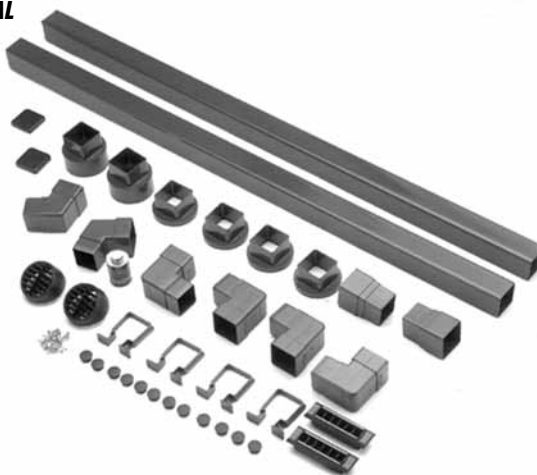
HEATER-A/C



*Shown with remote
mount controls.*

OPTIONS:**Plenum Assembly**

RD-3-6060-0P
With 2 1/2" hose
adapters

**UNIVERSAL
DUCT KIT**
78R2100

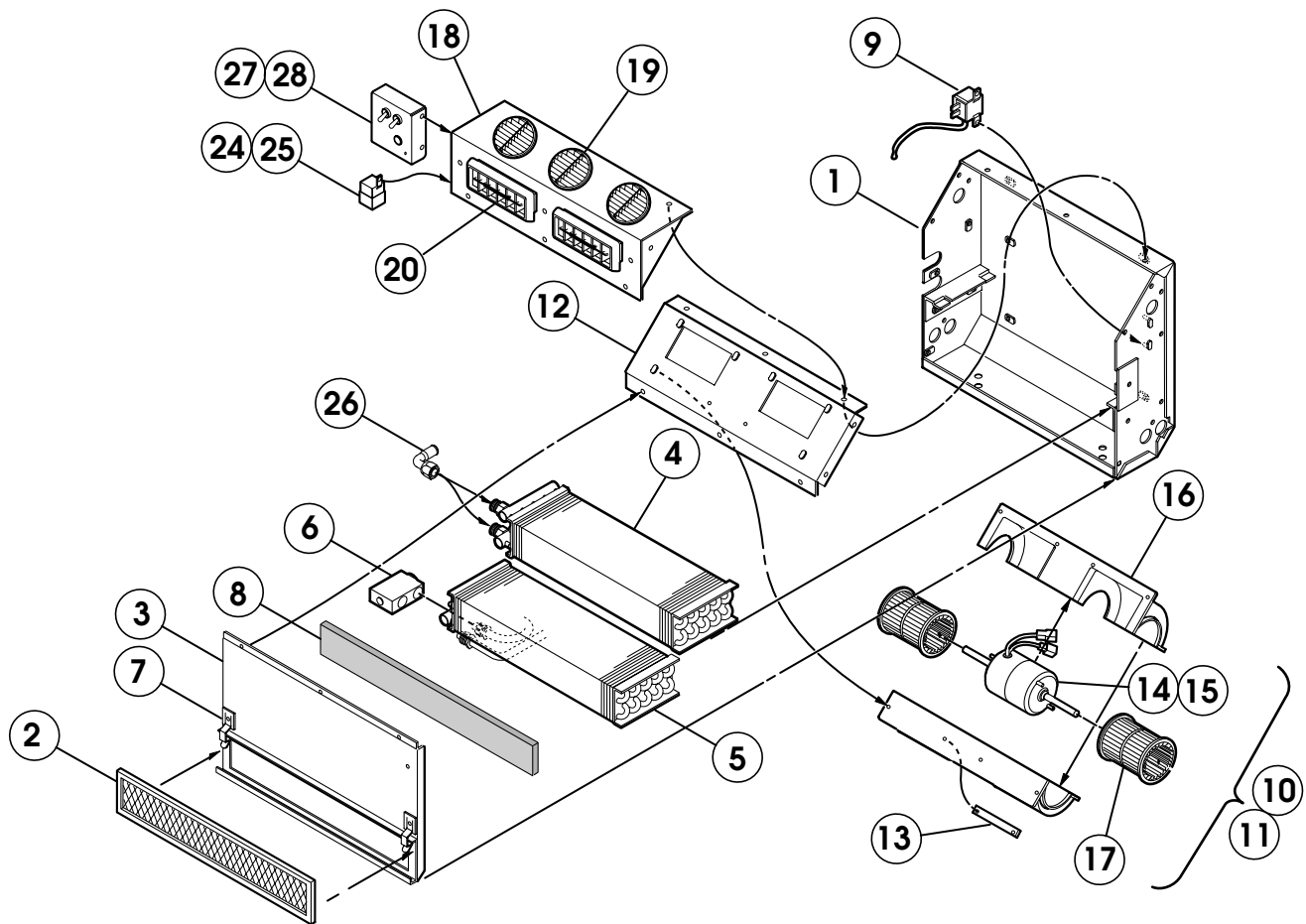
R-8500 SPECIFICATIONS

BTU'S	Heating – 22,000 BTU/Hr @ 100°F (6.4 kW @ 37.8°C) air temperature rise Cooling – 15,200 BTU/Hr with 36°F (w 4.5 kW w/ 2.2°C) refrigerant temp. and 80°F (26.7°C) wet bulb entering air
AIR FLOW	205 CFM (348 m3/h)
WEIGHT	24 lbs. (11 kg)
MOTOR	Three-speed field wound
CURRENT DRAW	13.5 amps @ 13.6 VDC (includes 4 amps for A/C clutch) 6.75 amps @ 27.2 VDC (includes 2 amps for A/C clutch)

R-8500 SYSTEM ORDERING GUIDE

	R12/R-134a	NOTES	
UNITS	R-8500-2P R-8500-2-24P R-8500-3P R-8500-3-24P	12 VDC – Heater - A/C 24 VDC – Heater - A/C 12 VDC – A/C Only 24 VDC – A/C Only	
CONDENSER	R-9720-3P - Remote Mount R-9720-3-24P - Remote Mount 77R0650 - Radiator Mount	12 VDC – See Units Condensers section 24 VDC – See Units Condensers section See 77 Series Condensers section	
GENERAL PURPOSE INSTALLATION KIT	78R1705 78R1025 78R1027 78R1070 78R0100	Remote Mount Rooftop Condenser Front mount condenser Front mount condenser Heater Hose	ATCO version ATCO version E-Z Clip version ATCO version 5/8" diameter, 50'
COMPRESSOR	See 75 Series Compressors section		
R134A CHARGE FITTING	75R5681 & 75R5688	Required with CCI and TECUMSEH applications.	
CLUTCH TECUMSEH/CCI	See 75 Series Clutch section		
COMPRESSOR MOUNT KIT	See Compressor Mount Applications section		
OPTIONS	Replacement Recirc Filter Plenum Assembly Universal Duct Kit	78R5330 RD-3-6060-0P 78R2100	
Water Valve for Heater/AC is supplied by customer			

SERVICE PARTS LIST



ITEM	NOTE	PART NO.	DESCRIPTION	CAT NO	ITEM	NOTE	PART NO.	DESCRIPTION	CAT NO
1		RD-3-6051-0	HOUSING ASSY		17	A	RD-5-5656-0	BLOWER WHEEL (2)	73R7000
2		RD-3-6162-0	INTAKE FILTER		18		RD-3-6720-0	PLENUM ASSY	
3		RD-3-6055-0	COVER ASSY (TOP)		19		RD-5-5222-0	LOUVER ASSY (3)	
4		RD-1-0830-0	HEATER CORE ASSY	76R1030	20		RD-5-6987-0	LOUVER (2)	
5		RD-2-1909-0	EVAPORATOR ASSY	76R5030	21	B	RD-3-6727-0	ACCESSORY KIT	
6		RD-5-7125-0	EXPANSION VALVE	71R8340	22	B	RD-5-5874-0	CIRCUIT BREAKER-30AMP (12V)	71R1300
7		RD-5-5965-0	SPRING CLIP (2)		23	B	RD-5-6602-0	CIRCUIT BREAKER-15AMP (24V)	71R1310
8		RD-3-6068-0	GASKET (CORE)		24	C	RD-5-7232-0	RELAY (12V)	71R1912
9		RD-5-4531-24	THERMOSTAT	71R3200	25	C	RD-5-7233-0	RELAY (24V)	71R1914
10		RD-3-6062-0	MOTOR BLOWER ASSY (12V)		26	C	RD-1-0426-0	SWIVEL FITTING ASSY (2)	
11		RD-3-6062-1	MOTOR BLOWER ASSY (24V)		27	C	RD-3-6100-0	CONT. PNL ASSY (A/C ONLY)	
12	A	RD-3-6048-2	BRACKET (BLOWER ASSY)		28	C	RD-3-6082-0	CONT. PNL ASSY (A/C-HEAT)	
13	A	RD-2-1383-1	ATTACH STRIP ASSY		29	D	RD-5-0071-0	SWITCH (FAN SPEED)	71R0400
14	A	RD-5-6772-0	MOTOR (12V)	73R4112	30	D	RD-5-3748-0	SWITCH (MODE A/C ONLY)	71R0010
15	A	RD-5-6772-24	MOTOR (24V)	73R4114	31	D	RD-4123-2	SWITCH (MODE HEAT-A/C)	71R0200
16	A	RD-5-3781-0	BLOWER HOUSING		32	BC	RD-5-6532-0	DRAIN HOSE	

A. PART OF ITEM 10/11 B. NOT SHOWN C. INCLUDED IN ACCESSORY KIT (ITEM 21) D. PART OF ITEM 27/28

ORDERING INFORMATION

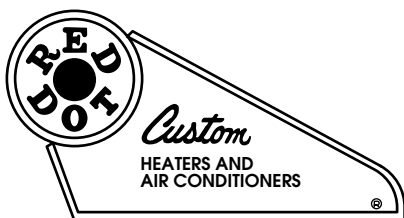
ORDER BY MODEL NUMBER **R-8500-0** FOR HEATER - A/C

ORDER BY MODEL NUMBER **R-8500-1** FOR A/C ONLY

FOR 24V ADD **-24** TO MODEL NUMBER

OPTIONS: PLENUM ASSEMBLY RD-3-6060-0

RED DOT CORPORATION P.O. Box 88790 Seattle, WA 98138 (206) 251-6897 Fax: (206) 251-3934

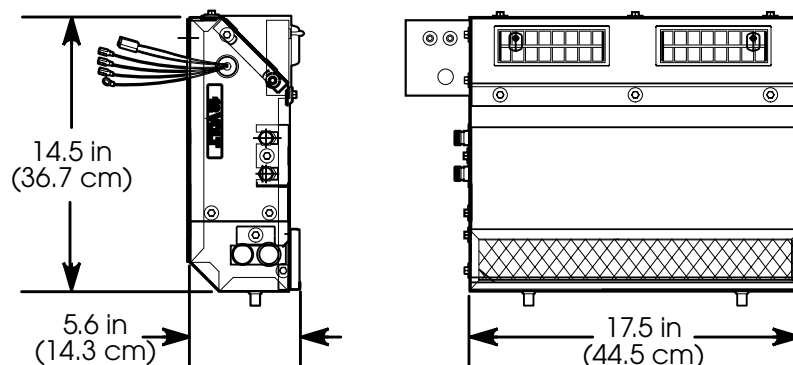


Compact Heater-A/C R-8500 Series

R-134a Compatible

TECHNICAL SALES BULLETIN AND SERVICE PARTS LIST

DIMENSIONS



SPECIFICATIONS

BTU's:

Heating - 22,000 BTU/Hr @ 100°F
(5,544 kcal/h @ 37.8°C) Air Temp. Rise
Cooling - 15,200 BTU/Hr with 36°F (3,830 kcal/h w/2.2°C)
Refrigerant Temp. and 80°F (26.7°C) Wet Bulb Entering Air

Air Flow:

205 CFM (348 m³/h)

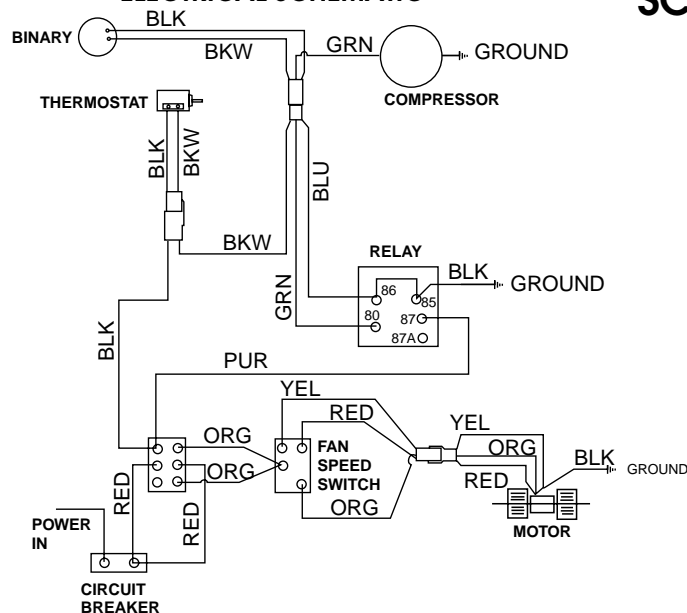
Weight:

24 Lbs (11 Kg)

Current Draw:

13.5 Amps at 13.6 VDC (Includes 4 Amps for A/C Clutch)
6.6 Amps at 27.2 VDC (Includes 2 Amps for A/C Clutch)

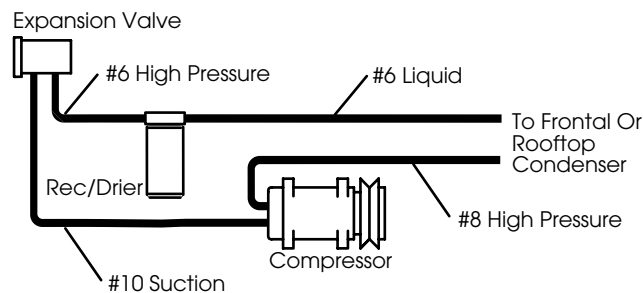
ELECTRICAL SCHEMATIC



RD-3-8263-0 (REV --)

SCHEMATICS

PLUMBING SCHEMATIC



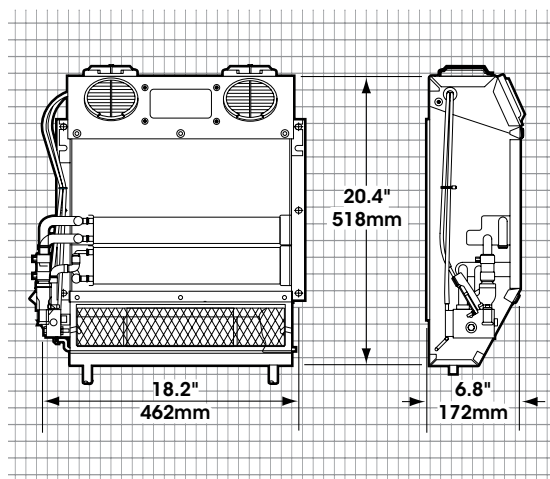
OFF-ROAD

R-8545 Backwall*Air Conditioner with Heat Option***CONSTRUCTION • MINING • AGRICULTURE**

Compact and powerful, the R-8545 produces the highest output of any off-road unit its size. Its performance and durability make the R-8545 the ideal choice for off-highway equipment cabs where space is a premium and reliability is essential. Engineered to filter in-cab air as well as incoming outside air when pressurization is required. Models include A/C only or heater and A/C combination.

R-8545 SPECIFICATIONS

BTU'S	Heating – 28,600 BTU/Hr @ 100°F (8.4 kW @ 37.8°C) air temperature rise Cooling – 18,000 BTU/Hr with 36°F (5.3 kW with 2.2°C) refrigerant temp. and 80°F (26.7°C) wet bulb entering air
AIR FLOW	265 CFM (450 m3/h)
WEIGHT	Heater & A/C – 39 lbs. (18 kg) A/C Only – 34 lbs. (15 kg)
MOTOR	Totally sealed, 12 or 24 VDC permanent magnet type with long life brushes, and heavy duty pre-lubricated sealed ball bearings
CURRENT DRAW	16.1 amps @ 13.6 VDC (includes 4 amps for A/C clutch), 8 amps @ 27.2 VDC (includes 2 amps for A/C clutch)
CONTROLS	Mode selector switch (heat or A/C), three-speed fan switch, fixed setting A/C thermostat, cable controlled water valve



**Filter Kits for use with
in-line booster pressurizer**

Horizontal: 78R5100



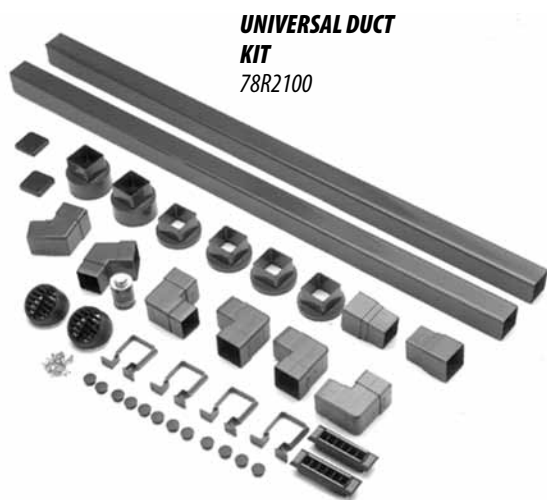
Vertical: 78R5110

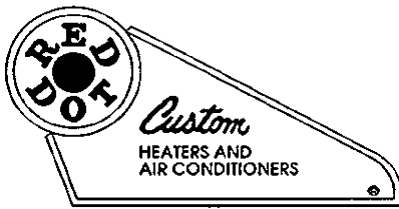
**Inline Booster
Pressurizers**

73R9202 (12 VDC)
73R9204 (24 VDC)

3" DEFROST HOSE
SOLD SEPARATELY
78R0300

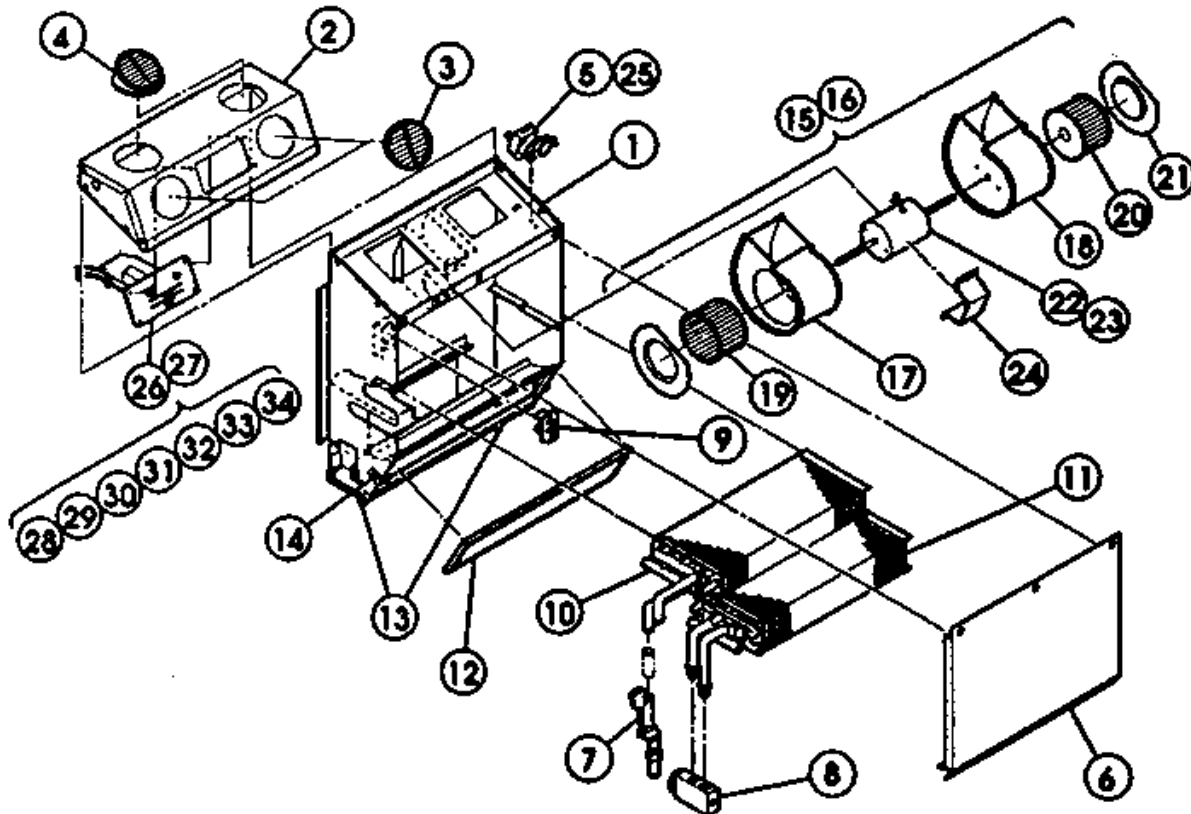
R-8545 SYSTEM ORDERING GUIDE			
	R12/R-134a	NOTES	
UNITS	R-8545-14P	12 VDC – A/C Only	
	R-8545-14-24P	24 VDC – A/C Only	
	R-8545-12P	12 VDC – Heater-A/C	
	R-8545-12-24P	24 VDC – Heater-A/C	
CONDENSER	R-9720-3P - 12V, Remote Mount	See Units Condenser section	
	R-9720-3-24P - 24V, Remote Mount	See Units Condenser section	
	77R0650 - Radiator Mount	See 77 Series Condensers section	
GENERAL PURPOSE INSTALLATION KIT	78R1705	Remote Mount	ATCO version
	78R1025	Rooftop Condenser	ATCO version
	78R1027	Front mount condenser	E-Z Clip version
	78R1070	Front mount condenser	ATCO version
	78R0100	Heater Hose	5/8" diameter, 50'
COMPRESSOR	See 75 Series Compressor section		
R134A CHARGE FITTING	75R5681 & 75R5688	Required for CCI and TECUMSEH applications.	
CLUTCH TECUMSEH/CCI	See 75 Series Clutch section		
COMPRESSOR MOUNT KIT	See Compressor Mount Applications section		
OPTIONS	3" Air Outlet Adapter for Pressurization RD-3-5448-0P		
	Remote Filters	See Filters & Pressurizers section	
	Pressurizers	See Filters & Pressurizers section	
	Universal Duct Kit 78R2100		
	Plenum	RD-3-14486-0P	





Backwall A/C – Heater (option) Model R-8545

SERVICE PARTS LIST



ITEM	NOTE	PART NO.	DESCRIPTION	ITEM	NOTE	PART NO.	DESCRIPTION
1		RD-3-5264-0	HOUSING ASSY.	18		RD--2-1207-2	BLOWER ASSY.
2		RD-3-5273-0P	PLENUM ASSY.	19		RD-5-7311-0	BLOWER WHEEL
3		RD-5-5223-1	AIR DIFFUSER ASSY.(2)	20		RD-5-7312-0	BLOWER WHEEL
4		RD-5-5223-0	AIR DIFFUSER ASSY.(2)	21		RD-3-3928-2	ENTRY RINGS (2)
5		RD-4427-24	THERMOSTAT	22	C	RD-5-5121-0	MOTOR - 12V
6		RD-3-5290-0	COVER ASSY.	23	D	RD-5-5121-24	MOTOR - 24V
7	A	RD-5-7760-1	WATER VALVE	24		RD-3-3174-0	RETAINER - MOTOR
8		RD-5-6868-0	EXPANSION VALVE	25	E	RD-5-3816-18	TUBE - 5/32 I.D.
9		RD-5-3647-0	RESISTOR	26	A	RD-3-5277-0	CONTROL PANEL ASSY.
10	A	RD-1-0771-1	HEATER CORE ASSY.	27	B	RD-3-5277-1	CONTROL PANEL ASSY.
11		RD-2-1664-0	EVAPORATOR ASSY.	28	A, E	RD-3-5413-0	LABEL - CONTROL PANEL
12		RD-5-6240-0	FILTER	29	B, E	RD-3-5413-1	LABEL - CONTROL PANEL
13		RD-5-3550-24	DRAIN HOSE (2)	30	E	RD-3-4096-0	LEVER - CONTROL
14		RD-5-6239-0	SNAP FASTNER (2)	31	E	RD-5-4694-1	SWITCH - SPEED, FAN
15	C	RD-2-1206-2	MOTOR BLWR ASSY.	32	E	RD-5-3748-0	SWITCH - TOGGLE, SPST
16	D	RD-2-1206-3	MOTOR BLWR ASSY.	33	E	RD-5-4450-0	KNOB
17		RD-2-1207-1	BLOWER ASSY.	34	E	RD-4180-24	CONTROL CABLE

A. HEATER A/C COMBOS ONLY

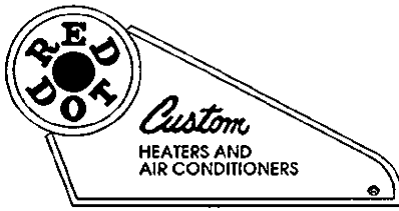
C. 12 VOLT ONLY

D. 24 VOLT ONLY

B. A/C ONLY

E. NOT SHOWN

Red Dot Corporation PO Box 88790, Seattle, WA 98138 (425) 251-6897 Fax (425) 251-3934



Heavy Duty Heater / Air Conditioner Model R-8545

INSTALLATION INSTRUCTIONS

NOTE

1. Please read instructions all the way through, making sure you have all the parts and tools
2. While working on or around a vehicle, disconnect the battery to prevent accidental start up or electrical shorts
3. It has been established that R-12 refrigerant does deplete the earth's protective ozone layer. Use care so as not to release this material into the atmosphere
4. A/C systems operate under high pressure At 77°F the refrigerant container Will be pressurized to approximately 80 psi. Use caution When working with these materials. Goggles are recommended.
5. To function properly the A/C system must be clean and dry. Keep caps or protective covers on all hoses and fittings until final assembly
6. **IMPORTANT:** Attach appropriate SAE warning label to vehicle.

ADDITIONAL ITEMS REQUIRED FOR COMPLETE INSTALLATION:

- | | |
|--------------------------------|--|
| A) Compressor | 8 to 10 cubic inch displacement required (Sanden SD-508, SD-510 or equivalent). For HFC use a compressor compatible with 134a. |
| B) Condenser | Remote Mount (R-9720 or equivalent); or Radiator Mount (77R 0650 or equivalent). For R-134a use R-9725 or 77R 0650. |
| C) Compressor Mount Kit | This includes mounting hardware, belts and pulleys. |
| D) Receiver Drier | High capacity (12 cubic inches of desiccant) 74R 1706 or equivalent. For R-134a applications use 74R 1816 or equivalent. |
| E) System Protection | 71R7000 binary switch, high and low pressure cut-out or equivalent dual switches. For R-134a applications use 71R 7050. |
| F) Refrigerant Hose | Nylon Barrier or nylon lined refrigerant hose is the minimum quality recommended for heavy duty applications. Push-on fittings can be used on either hose although a "crimp fitting" is recommended. Reusable fittings can be used only with the Aeroquip nylon lined hose (R-12 applications only). Galaxy hose with, beadlock crimp fittings are recommended for 134a. |

A. Mounting the Unit

1. Determine the most suitable location for mounting the air conditioning unit.
2. Mark the mounting holes, drain hole locations and fresh air opening (optional) locations. See Figure 1.

NOTE: 1) If mounting template is lost the fresh air intake opening can be marked (for 78R 5150 panel filter by scribing a side and bottom of the unit line on the mounting surface and measuring up 1 1/4" from the bottom (for the bottom of the fresh air opening) and 4 1/4" from the side. Then mark a rectangular opening 2 3/4" high by 7 3/4" wide (to mark the outside of the fresh air opening).

2) If optional fresh air opening is used, fresh air door retaining screw on unit must be removed.

Red Dot Corporation P.O. Box 88790, Seattle, WA 98138 (425) 251-6897 Fax (425) 251-3934

3. Drill the mounting holes and remove burrs and sharp edges.
4. Mount unit to cab using mounting bolts, nuts and washers. See Figure 1.

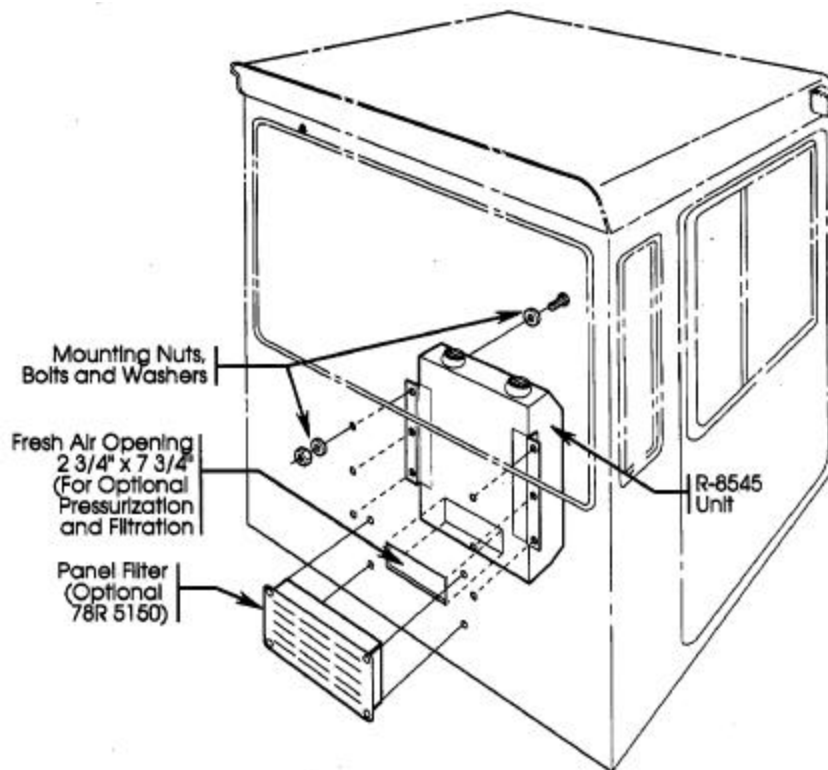
B. Compressor Mounting

1. Install compressor mounting hardware to engine block.

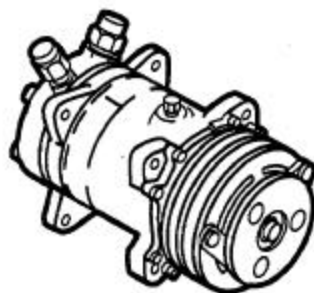
NOTE: Red Dot does not recommend any compressor mount designs that are not directly attached to the engine.

If fabrication of compressor mounting bracket is required, be sure to design so the belt wrap is a minimum of 1/3 around the clutch pulley and can be tensioned easily. If designing for a Sanden Compressor, Red Dot does provide an adjustable adapter bracket 75R 6010 which often saves time in design and fabrication. See Figure 2.

2. Install compressor making sure to properly align and tension drive belt.



TYPICAL UNIT PLACEMENT
Figure 1



SANDEN COMPRESSOR AND BRACKET
Figure 2



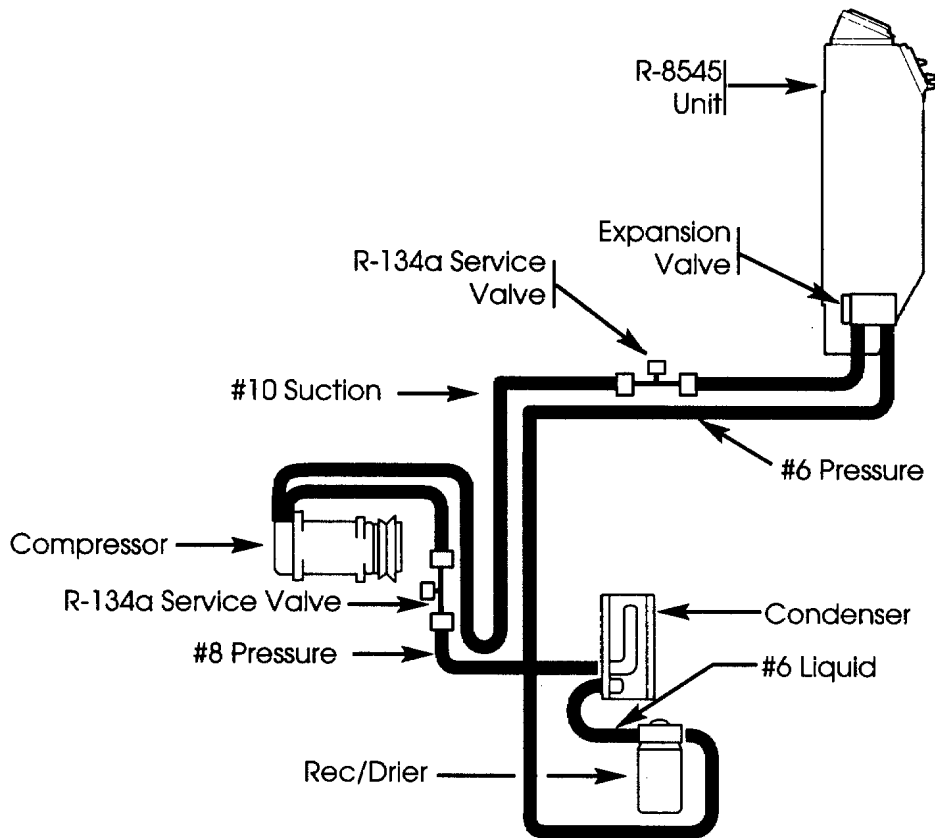
75R 6010

C. Condenser Mounting (Remote or Radiator Style) Remote Mount

1. Locate in an area easily accessible and free of dust and other debris.
2. Mount in a position so that the large (#8) hose fitting is above the small (#6) hose fitting. **Radiator Mount**
 1. A radiator mounted condenser will be effective only if positioned to receive maximum air flow.
 2. Install condenser allowing a minimum of 1.5 inch air space between the condenser and the radiator to prevent heat transfer from the radiator, Also, all radiators should have baffles on top and sides to prevent hot air recirculating back around the radiator.

D. Refrigerant Hose Installation

1. Determine desired hose routing and measure hose lengths, per plumbing schematic, See Figure 3.
NOTE: if suction line #10 hose length is longer than 10 feet, Red Dot recommends using #12 refrigerant hose and "step-up" refrigerant fittings. This will improve system function.
2. Cut refrigerant hose to length using a knife. **Do Not Saw Off.** See Figure 4.



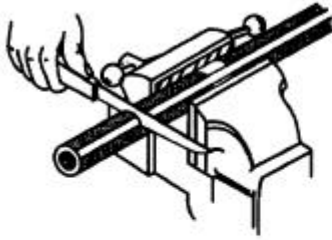
R-8545 PLUMBING SCHEMATIC
Figure 3

3. Install fittings on hose. See Figure 4, (Be sure to clean out refrigerant hose after cutting).
4. Additional refrigerant oil is required for long hose applications.
5. Lubricate "O" rings with mineral oil and attach to fittings. Route and connect #6, #8 and #10 hoses to unit, compressor, condenser, and receiver drier per plumbing schematic. See Figure 3.
6. Use clamps to secure hoses and prevent hose movement. Hoses must not come in contact with hot engine components (exhaust manifold, etc.) and they should not be subject to mechanical abrasions

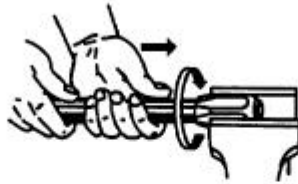
Red Dot Corporation P.O. Box 88790, Seattle, WA 98138 (425) 251-6897 Fax (425) 251-3934

REFRIGERANT HOSE INSTALLATION - Figure 4

MAKE CERTAIN "O" RINGS ARE ON ALL REFRIGERANT FITTINGS BEFORE SECURING



1. Cut refrigerant hose cleanly at 90° to proper length using a sharp clean edge.

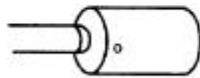


2. Screw hose into collar (left hand thread) until hose bottoms. Back out 1/4 turn.



3. Screw fitting into collar until insert bottoms. (Lubricate insert and I.D. of hose for ease of assembly.)

REFUSABLE FITTINGS



Bubble Crimp Fitting

1. Cut hose as above in Fig. 1. Lubricate the inside of the fitting ferrule with refrigerant oil. (It's important to form a seal.)



Refrigerant Hose

2. Insert the hose into the ferrule, being certain to fully seat the hose so it is visible in the ferrule viewing hole.



Crimped Fitting and Refrigerant Hose

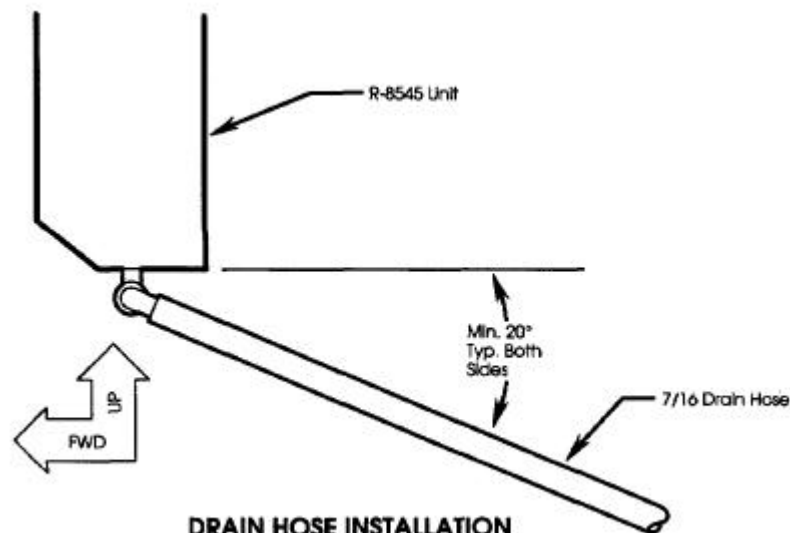
3. Use hand crimper part #79R 1510 or hydraulic crimper part #79R 1515 to crimp fitting on hose.

BUBBLE CRIMP

E. Drain Hose Installation

NOTE: See Figure 5 for additional information on drain hose installation.

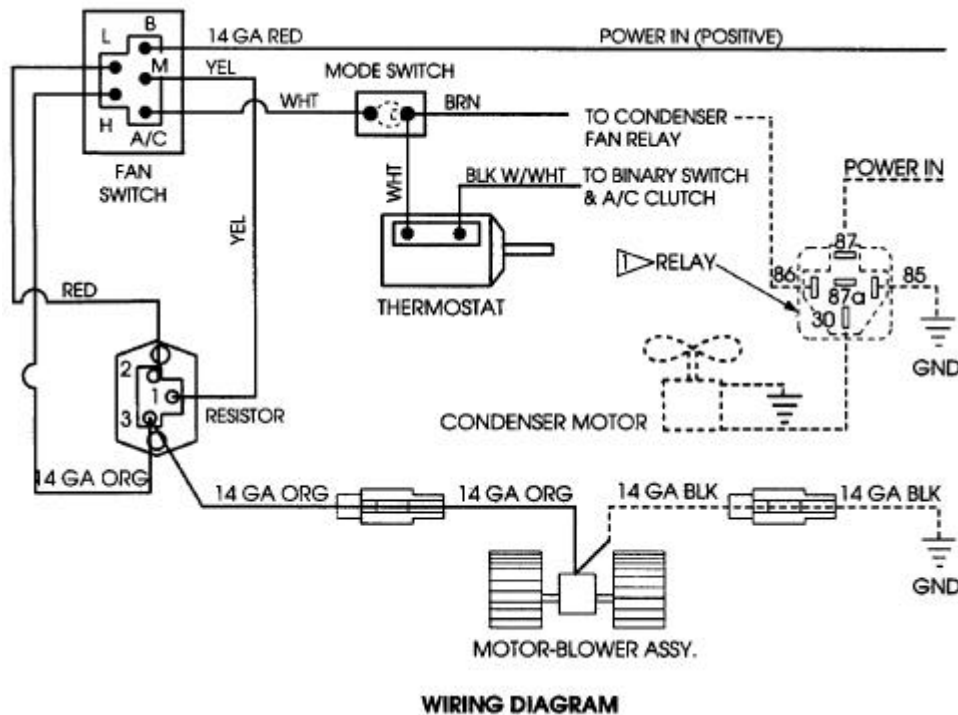
1. Attach drain hose assembly to the unit.
2. Route drain hoses out the cab at desired location. Be certain the drain hose runs downhill from the unit at a minimum slope angle of 20°.
3. Secure drain hoses with tie wraps, inspect to make sure hoses are not kinked or pinched off.



F. Unit Wiring

NOTE: See Figure 6 for wiring diagram.

1. Disconnect battery.
2. Black W/White - Route to A/C clutch through low pressure protection switch if included.
3. Red Wire - Connect to an ignition switch supply through a 30 amp circuit breaker for 12 volt system; a 15 amp circuit breaker for 24 volt system.
4. Black Wire - Unit grounding wire.
5. Brown Wire - Route to condenser fan relay (remote mount condenser).



G. Final Assembly and Check

WARNING

The owner/operator of the R-8545 unit accepts the responsibility for the proper and safe installation and maintenance of the unit. Special attention must be given to the mounting as well as the hose assembly and connections to be sure that they are securely fastened and in good condition to preclude the possibility of personal injury.

1. Connect the battery.
2. Evacuate the system, then charge with refrigerant.
3. Turn the ignition switch to the "On" position and place the fan speed switch on the highest position.
4. Place the Heat-A/C switch to the "A/C" position and the temperature control lever on the coldest position.
 - a. The clutch should click on and be engaged.
 - b. The evaporator blower should be turning at high speed.
5. Turn the fan switch to the "Off" position and compressor clutch should disengage.
6. Move the Heat-A/C switch to the "Heat" position and compressor should disengage.
7. Start engine and run at 1200-1500 rpm. Place the Heat-A/C switch to the "A/C" position and the fan speed on high. Check sight glass on receiver drier for bubbles. Add 6 to 8 ounces more R-12 after the sight glass just clears.

NOTE: Be aware that the sight glass may appear "milky" when charging with R-134a. Be careful not to overcharge the system.

8. Make sure clutch cycles off and on as system is operating

Red Dot Corporation P.O. Box 88790, Seattle, WA 98138 (425) 251-6897 Fax (425) 251-3934