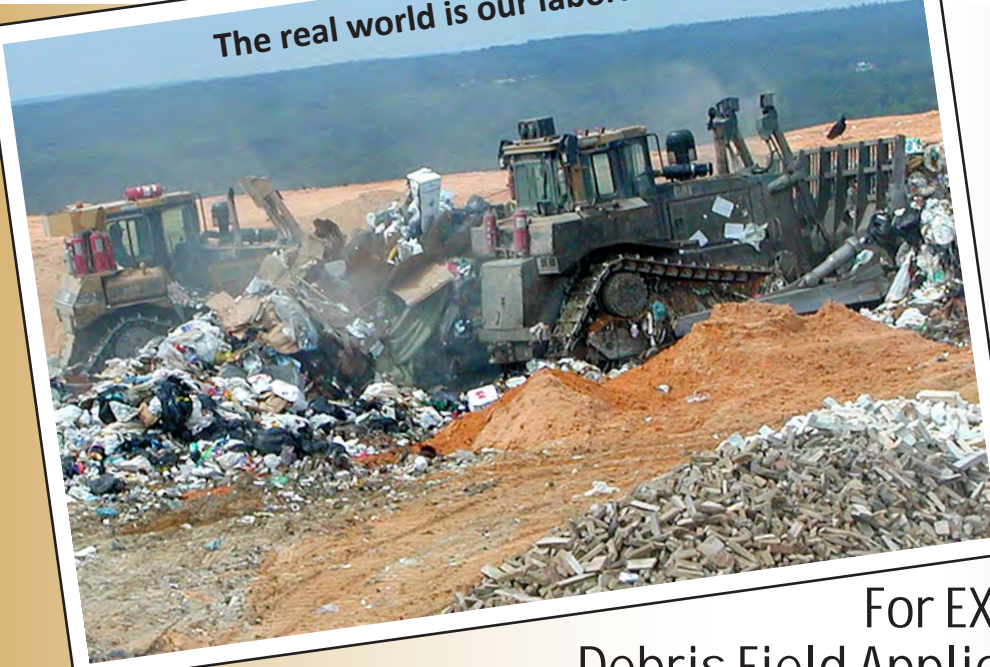


The real world is our laboratory!™



## For EXTREME Debris Field Applications

OPTIMAX® is more effective at removing mixed and extreme debris than any other precleaner in the world. Are you protecting the most vital part of YOUR investment? Your engine deserves a precleaner without peer, one that will protect and defend it from all of the enemies in the air.



[www.sy-klone.com](http://www.sy-klone.com)

### Try our **ONLINE SAVINGS CALCULATOR**

See how much money you can save, then email the results. Easy to use - enter your own usage and cost data, and the OPTIMAX Online Savings Calculator will estimate your annual savings. Enter the cost of installation and calculate how many months it will take to pay for itself.



**1-800-351-8265**

**Air Flow Range:** Models available for engine air flows from 100 to 1,400 CFM (2.83 to 39.64 m<sup>3</sup>/m) and much higher with multiple unit installations, contact Sy-Klone for details.

**Mounting:** Vertical, requires exhaust scavenging connection.

**Precleaner Maintenance:** Stage one, the Series 9000® Precleaner, is self-cleaning and maintenance-free. The second stage requires minimal maintenance as the chamber is completely open and there are no narrow openings to become plugged. The cover is removable and is easily accessible for inspection and cleaning (if necessary).

**Recommended Uses:** Waste, Mining, and Forestry. When you need more than the Series 9000® Precleaner, the OPTIMAX® removes mixed AND extreme debris.

**Elevation:** Sea Level to 10,000 feet.

### Carolina Landfill Site Manager:

*"We were blowing air filters out at least once a day and replacing the elements every three days. Now we go 300 to 500 hours before replacing the elements, without blowing out the filters.*

***Sy-Klone has provided technology that saves us money, increases our productivity, and makes for happier operators."***

D10R with very high CFM requirement has a quadruple OPTIMAX installation ▶



## How it works:

**Step 1:** Air enters the OPTIMAX® through a prescreen (or optional heavy-debris screen screen) that removes the largest contaminants.

**Step 2:** Curved particle-accelerator blades direct air and dirt up against the sidewall.

**Step 3:** Strakes (angled fins) along the interior surface move heavier-than-air debris towards the ejection slot.

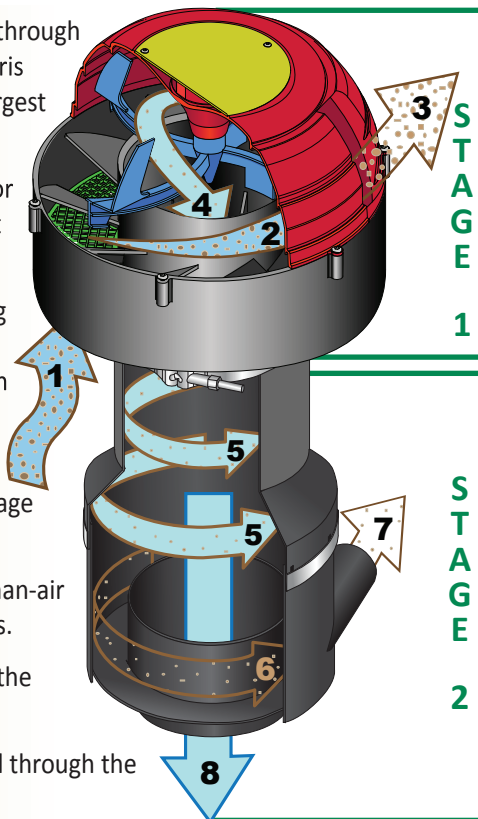
**Step 4:** The pre-cleaned air exits stage one and enters the second stage of the OPTIMAX®.

**Step 5:** Remaining fine heavier-than-air debris swirls around the outer walls.

**Step 6:** Debris is then isolated in the exit tray of stage two.

**Step 7:** Isolated debris is removed through the machine's exhaust system.

**Step 8:** Clean air continues to the engine's air filter housing.



## Features & Benefits:

### Extends maintenance intervals:

Lowers cost per operating hour

### Proven to handle extreme conditions:

Works in all weather

### Minimal maintenance required:

Reduces maintenance downtime

### Designed with built-in heavy debris screen:

Blocks large items from intake

### Non-reflective finish:

Minimal operator distraction

### Dual-stage design:

Effective on mixed debris in extreme conditions

### South Carolina Operations Supervisor:

*"We really like the OPTIMAX. We've gone from blowing the filters every second day and changing the filters once a week, to changing the engine filters every 300 hours, without ever opening the air filter housings to blow out the filters. The operators are really sold on the systems, and so am I."*

## OPTIMAX Savings: Show Me the Money!

### Air Filter Service **WITHOUT** OPTIMAX®

Hourly labor rate: \$15

Blow out 6 days/week X 52 weeks **\$2,340.00**  
(30 minutes each event)

Air Filter cost: \$48.05 each

1 New Air Filter each week X 52 weeks **\$2,498.60**

Labor to change filter X 52 weeks **\$390.00**  
(30 minutes each event)

**Total cost per year: \$5,228.60**

### Air Filter Service **WITH** OPTIMAX®

Hourly labor rate: \$15.00

Routine blow out unnecessary **\$0.00**

Air Filter cost: \$48.05 each

6 New Air Filters per year **\$288.30**

Labor to change filter 6 times per year **\$45.00**  
(30 minutes each event)

**Total cost per year: \$333.30**

**Total ANNUAL Savings: \$4,895.<sup>30</sup>**

Numbers figured on a  
D6R operating 3,000  
hours per year.  
D6R▶



Registered to  
ISO 9001:2008

© 2008 Sy-Klone  
International.  
All rights reserved.  
LIT 2002 Rev 005 11/09



Sy-Klone Dealer:



**CLIMATRANS INC.**

[www.climatrans.com](http://www.climatrans.com)  
Eastern Canada